



 Nordweld |  ^{EU}

MANUFACTURER OF TANK BUILDING
SYSTEM & WALKWAY SYSTEMS

Nordweld Tank Building System is an innovative technology for building atmospheric and pressured tanks. Our system is made for building of tanks with a diameter of 8 to 50 meters and a weight of up to 700 tons. All components are stored and transported in 20ft HC Shipping containers

30 - 60%



30-40%
savings

if you use

Standard system

with Roller Beds

Pre-rolled plates,
mechanized welding

40-60%
savings

if you use

Advanced system

with Wheel Trolley & Bending
Machine + Decoiler / Plate Track

More efficient, mechanized welding, rolling
the shell material onsite, using coil or flat plates

Technology offers the possibility to **perform all work at ground level**. By starting with the roof, it makes a good weather protection and keep the roundness of the tank during the building process. The tank is rotating during welding progress and the installation of the sheets. All welding can be mechanized and preform from one point acc. to the customer's request.



MAIN ADVANTAGES

- Reduced production hours,
- Mechanized welding,
- Cost reduction for cranes, NDT and scaffolding,
- All material assembled from one location,
- Rotating the entire tank, advantage when the space on site is limited,
- Safety - all work is done from one location at ground level,
- Possibility to roll the shell material on site,
- Designed to work in harsh environmental conditions,
- High quality of our products,
- Logistical efficiency.

TWO OPTIONS TO SHOOSE:

- Standard system



- Advanced system

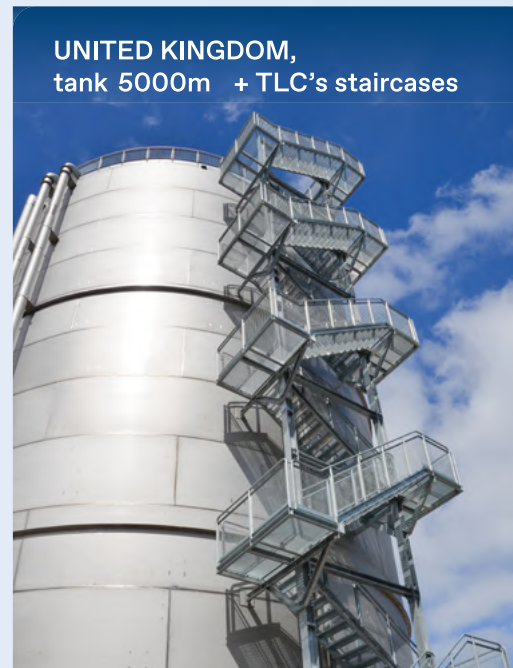


A hand holding a pen over a catalog, with the text 'DOWNLOAD OUR CATALOG' overlaid in white. The background is a blue gradient with a faint image of a hand holding a pen over a catalog.

DOWNLOAD OUR CATALOG

TANK STORAGE AWARDS

Nordweld was awarded the Tank Storage 1st prize for “Innovative Technology”, at the exhibition 2023.



Walkway systems are a reliable construction that allow for safe access to tank's roof. Modern solutions and well-thought out system of fixings guarantee safety of users.

The walkway systems consist of:

- Staircases
- Spiral stairs
- Helicoidal stairs
- Technical ladders
- Steel platforms, landings and walkways
- Railings and balustrades

We offer full service:



sale / rent



production



project



logistics




assembly




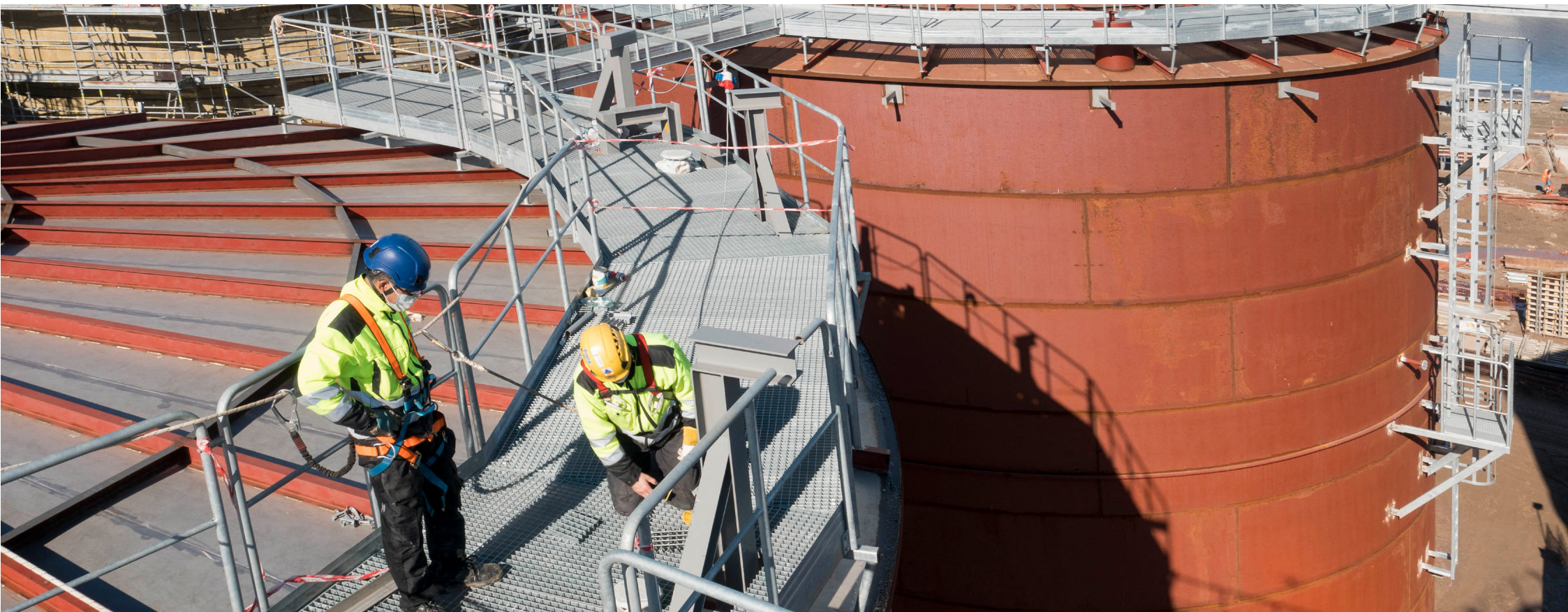
Contact us

Nordweld Sp. z o.o.
Przemysłowa 3
38-300 Gorlice, Poland

 +48 600 151 551

 sales@nordweld.eu

 www.nordweld.eu



About our Group

Nordweld is part of the TLC Group. It is a Swedish-Polish Group specialising in the design and production of solutions for the industrial and construction sectors. It is committed to green solutions and sustainability in its operations. The Group's product range includes steel walkway systems for the industry, temporary construction site protections and an innovative system for the construction of large-size tanks.

TLC started in 2005 as a small company and today it is a Group of companies with projects all over the world. The thousands of realisations that have been completed on various continents confirm the Group's position of a trusted business partner. TLC's key clients include leading companies in the industrial and construction sectors.

POLAND

SWEDEN

GERMANY

FRANCE

TLC Sp. z o.o.

Inter TLC AB

Inter TLC GmbH

Inter TLC SAS

+48 505 140 140

+46 70 525 99 18

+49 5147 709 00 72

+33 6 78 93 84 61

info@tlc.eu

info@intertlc.se

info@intertlc.de

info@intertlc.fr

tlc.eu

intertlc.se

intertlc.de

intertlc.fr

We ensure that all of TLC Sp. z o.o. products are of the highest quality through compliance with Factory Manufacture Control certification with EN 1090-1:2009+A1:2011, issued by the TÜV SÜD Polska Sp. z o.o. Certification Centre. We are a manufacturer with a certificate of the Integrated Quality, Environment and Health and Safety Management System according to ISO 9001/ ISO 14001/ ISO 45001 issued by Bureau Veritas Certification. TLC construction products meet the requirements of the European Directive 305/2011 (CPR) for structural steel and aluminum.

